

The irreversibility of the arrow of time in Space

Yanbikov Vil'dyan Shavkyatovich

Russian Federation, Volgograd.

*Corresponding author

Yanbikov Vil'dyan Shavkyatovich, Russian Federation, Volgograd.

Submitted: 09 Jun 2022; Accepted: 12 Jun 2022; Published: 30 Jun 2022

Citation: Yanbikov Vil'dyan Shavkyatovich, (2022) The irreversibility of the arrow of time in Space, J ENT Surg Res, 1(1), 01-02.

Abstract

The irreversibility of the arrow of time in Space.

Keywords: arrow of time, the property of a photon to emit gravity, A property of the physical vacuum.

Experimentally, the deflection of the rays towards the Sun was detected. The photon received an impulse directed to the center of the Sun. From the law of conservation of momentum. The sun received the same impulse in the direction of the photon's trajectory. The sun received the same impulse in the direction of the photon's trajectory. It has a strong effect on the Sun. Consider the mechanism of photon emission of gravitational waves. During the propagation of the photon in the physical vacuum. It should be assumed that the photon interacts with the matter of the physical vacuum. Assume that the photon shifts the particles of the physical vacuum from the equilibrium position along the path of the photon (Fig. 1).

Particles of the physical vacuum begin to make damped oscillatory movements along the photon trajectory. When a photon interacts with a physical vacuum substance. Part of the photon pulse is transmitted to the particles of the physical vacuum. When the particles of the physical vacuum vibrate. Gravitational waves are emitted in a perpendicular direction to the photon trajectory (Fig. 1). The photon loses its energy until it completely disappears. To prove that gravitational energy is radiated from the photon's trajectory. In the form of high-frequency gravitational waves. You can set up an experiment (Fig. 2). For rice. 2 shows a cylindrical glass flask installed so that the line A B is directed vertically upwards. Volume V is filled with water in

which the smallest particles of an opaque substance are suspended. Through channel A B that is not filled with water. A powerful light beam is emitted from a laser radiation source. After some time, the particles of the opaque substance will gather along the AB channel.

This means that the photon has the property of attracting matter to its trajectory. A photon can be taken as an oscillating system (clock). With a changing oscillation period. The period of oscillation of these watches is increasing. Until the source of vibrations (hours) completely disappears. Hence the conclusion that the arrow of time on the scale of Space is always directed only in one direction. And it can't have a reverse direction. For Fig.1. shows a diagram (plots) of the propagation of gravitational energy from the photon trajectory.

Calculate the average energy emitted by a photon from the linear meter of the photon trajectory for green ($\lambda = 555\text{nm}$). The average energy emitted by a photon from a linear meter is determined from the formula $\epsilon = hv/10^{25}$ D j= 3.6/10⁴⁴ D j. Where 10²⁵ is the horizon of visibility of the Universe.

Figure 1 shows the notation: OZ – photon trajectory; H-direction of propagation of gravitational waves.

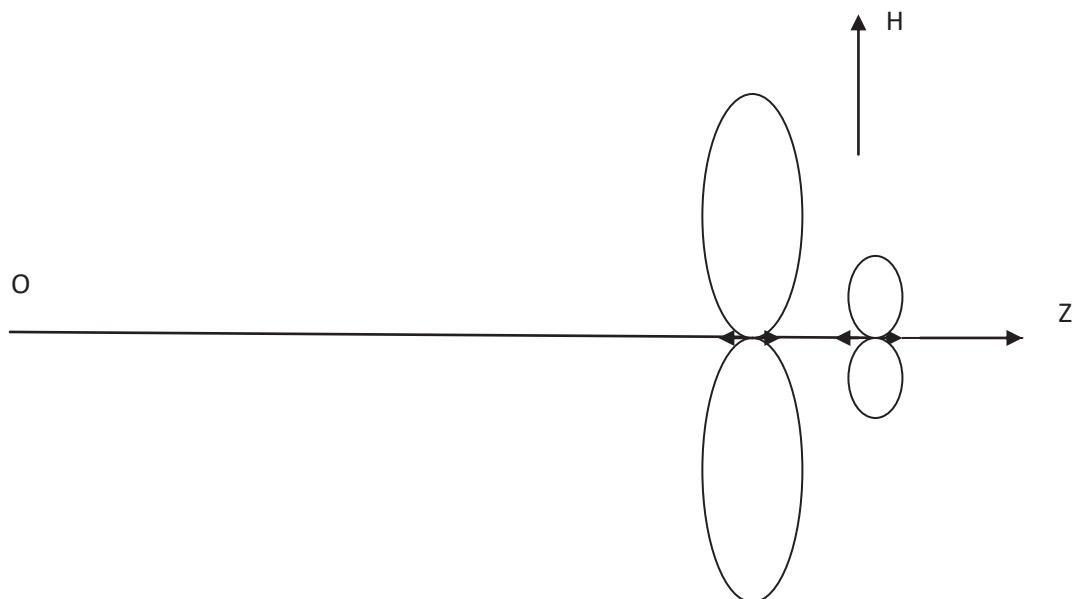


Figure 1

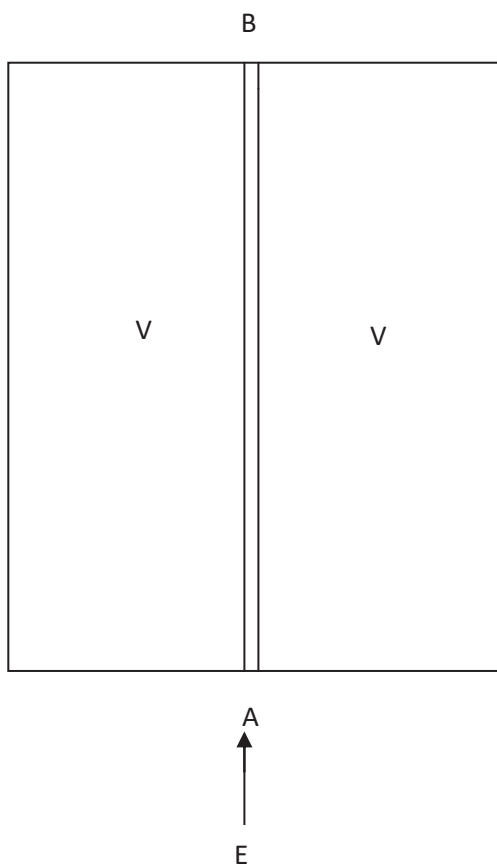


Figure 2

Copyright: ©2022 Yanbikov Vildyan Shavkyatovich. This is an open-access article distributed under the terms of the Creative Commons Attribution License, which permits unrestricted use, distribution, and reproduction in any medium, provided the original author and source are credited.