

The Celestial Body Language Implied by the Humanoid Solar System

Henghua Yan*

Department of Testing, Jiangsu Guojian Testing Technology, Wuxi City, China

*Corresponding Author

Henghua Yan, Department of Testing, Jiangsu Guojian Testing Technology, Wuxi City, China.

Submitted: 2025, Apr 14; Accepted: 2025, May 23; Published: 2025, May 27

Citation: Yan, H. (2025). The Celestial Body Language Implied by the Humanoid Solar System. *Biomed Sci Clin Res*, 4(2), 01-06.

Abstract

It has been reported by the latest academic research that every human individual's life actually starts with the Micro Bang of fertilized egg caused by the micro sparkling love between the egg and the sperms. Based on the corresponding relationship between the main celestial bodies of the Solar System and human body parts, it is implied by the celestial body language of the Solar System that the Solar System originated from the Big Bang of the Interstellar Dirty Snow Ball Egg (IDSB Egg) after it was deeply kissed by the foreign celestial bodies (celestial body sperms). Or exactly speaking, the life of the Humanoid Solar System started with the Big Bang of the fertilized celestial body egg caused by the celestial body love of celestial body sperms.

Similar to the golden law of the birth sequence of human individual that from the big end of head to the small end of foot naturally, the evolution sequence of the Humanoid Solar System was from the big end of head (the Sun) to the small end of tiptoe (the Pluto) of foot. Therefore, it was a big mistake that the Pluto was downgraded to dwarf planet on 24 August 2006 artificially. As a result of that misleading action of humanity, the perfectness of the Humanoid Solar System was destroyed with her tiptoe or foot cutting off.

Keywords: Unity of Heaven and Humankind, Humanoid Solar System, Micro Sparkling of Love, Micro Bang of the Fertilized Egg, Big Bang of IDSB Egg, Celestial Body Necklace, Super Celestial Body Mini-Skirt, Retrograde Fetus, Natural Fetus, Matryoshka Doll of Russia

1. Introduction

What did the Solar System originate from? What was the evolution sequence of the main celestial bodies of the Solar System, not including the Moon?

Although it seems more complicated in the eyes of academic researchers for the above two questions, in fact the answers are implied in the evolution of human individual's life based on the corresponding relationship between the main celestial bodies of the Solar System and human body parts.

Human individual's life starts with the micro Bang of the fertilized egg based on latest academic research. It implies that the Solar System originated from the Big Bang of fertilized celestial body egg.

The natural birth sequence of human baby coming to this world is from the big end of head to the small end of foot. That implies the evolution sequence of main celestial bodies of the Solar System was from the big end of the Sun to the small end of the Pluto, or from the center to the outer layer of it gradually.

2. Text the Corresponding Relationship Between the Main Celestial Bodies of the Solar System and the Human Body Parts

Based on the Chinese Traditional Culture of the idea quintessence of the unity of Heaven and Humankind, there is a corresponding relationship between the main celestial bodies of the Solar System (not including the Moon) and the human body parts.

It is shown as the following table 1,

No.	main celestial bodies of the Solar System	Human body parts
1	Sun	head
2	Mercury	neck
3	Venus	
4	Earth	
5	Mars	

6	Jupiter	chest
7	Saturn	hip
8	Uranus	knee
9	Neptune	ankle
10	Pluto	tiptoe

Table 1: The Corresponding Relationship Between the Main Celestial Bodies of the Solar System and the Human Body Parts

3. The Celestial Body Language Implied by the Rocky Asteroid Belt and the Ring of Saturn

It is not difficult to deduce that the main celestial bodies of the Solar System actually constitute the body of the Humanoid Solar System. It is shown by Figure 1 as follows.

Therefore, the rocky asteroid belt of the Solar System implies the celestial body necklace of the Humanoid Solar System, while the ring of Saturn just implies the super celestial body mini-skirt of it.

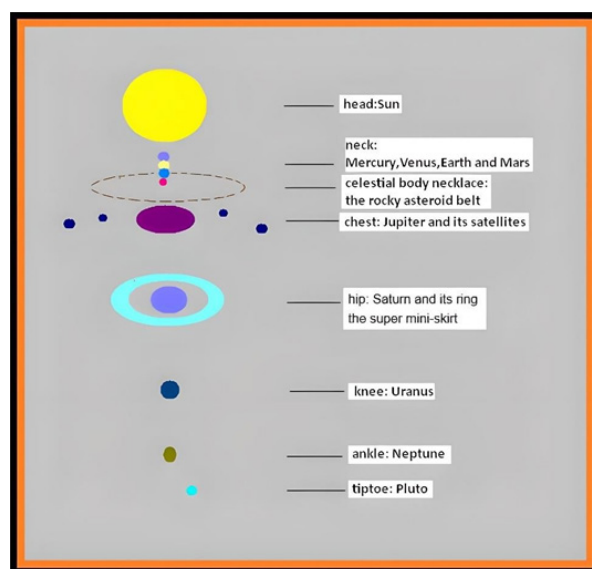


Figure 1: The celestial body language implied by the rocky asteroid belt and the ring of Saturn

4. The Celestial Body Language Implied by the Phenomenon of the Nine Planets Into a Straight Line of the Solar System

It is shown by Figure 2 as follows,

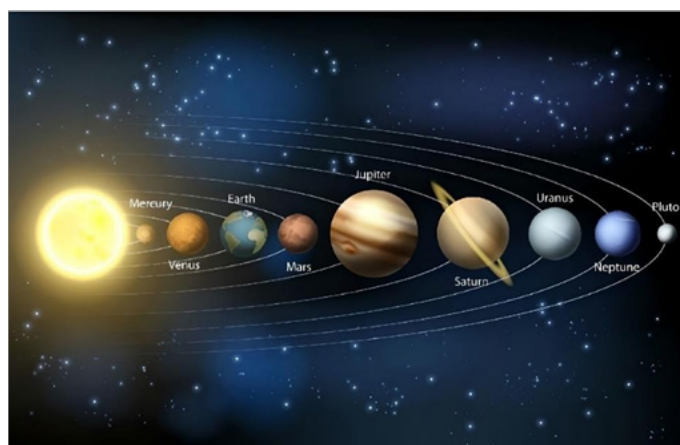


Figure 2: The celestial body language implied by the phenomenon of the nine planets into a straight line of the Solar System

The phenomenon of the nine planets into a straight line of the Solar System refers to the nine planets (including the Pluto) would get into one line in a period of about six thousand years.

It just implies that the Humanoid Solar System would be in the state of lying from head(the Sun) to tiptoe (the Pluto) of foot in the bubble of the Solar System.

5. The Micro Bang of the Fertilized Egg from which the Human Individual's Life Originated

It is popular known that the human individual's life starts with the fertilized egg which is combined by the egg and the sperm held by the female and the male respectively. What's more, it has been

reported that the micro sparkling of love could be detected by the precision instruments once the egg is inclined to be kissed by one of the billions of sperms.

It is shown by Figure 3 as follows,



Figure 3: The micro sparkling of love generated by the intimate kissing of the egg and a sperm

In other words, the life of the human individual actually originates from the Micro Bang of the fertilized egg. It is shown by Figure 4 as follows,

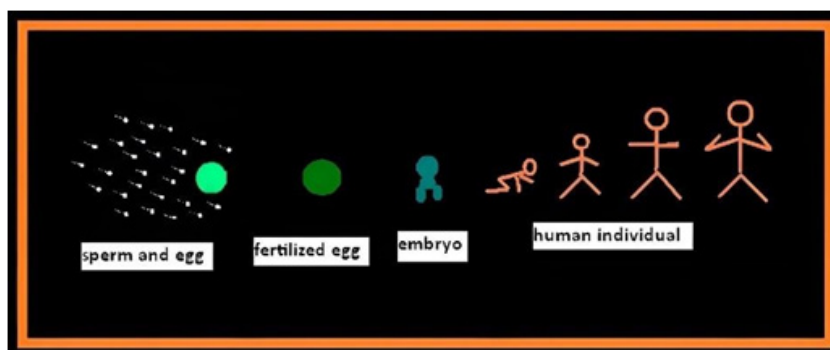


Figure 4: The Micro Bang of the fertilized egg from which the human individual's life originated

6. The Birth Sequence of the Human Individual's Body

The birth sequence of human baby's body would be from the big end of head to the small end of foot, which is called "Natural fetus", while the reverse birth sequence of human baby's body

would be dangerous for the baby and his or he mother, which is called "Retrograde fetus", and that situation would perhaps cause both of them to die. It is shown by Figure 5 as follows,

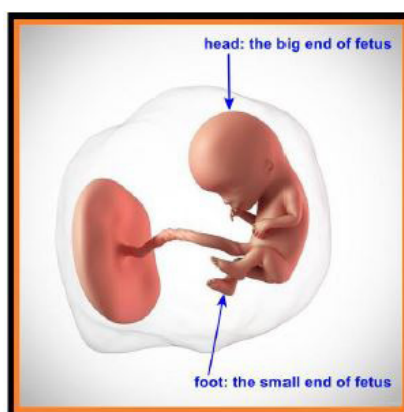


Figure 5: The big and small end of fetus of human being

So, when the fetus inclines to come to this world from the womb of his or her mother, his or her head should be on a downward direction. It is shown by Figure 6 as follows,



Figure 6: The downward direction of his or her head in womb before the fetus comes to this world

7. The Big Bang of the Interstellar Dirty Snow Ball Egg (IDSB Egg) from which the Solar System Originated

With the corresponding relationship between the main celestial bodies (not including the Moon) of the Solar System and the ancient plates of the Earth, it could be deduced that the Solar

System originated from the Big Bang of the Interstellar Dirty Snow Ball Egg (IDSB Egg) after it was kissed deeply by the foreign celestial bodies.

It is shown by Figure 7 as follows,

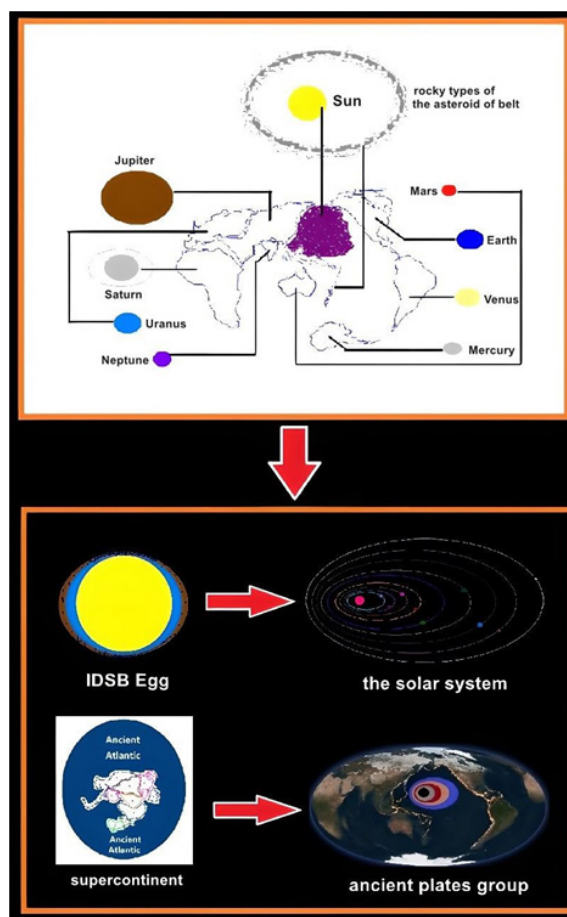


Figure 7: The Big Bang of the IDSB Egg from which the Solar System originated

8. The Evolution Sequence of the Main Celestial Bodies of the Humanoid Solar System

Actually, the Interstellar Dirty Snow Ball Egg (IDSB Egg) acted as the celestial body egg, and the foreign celestial bodies acted as the celestial body sperms. So, the life of the Humanoid Solar System started with the Big Bang of the fertilized celestial body egg which caused by the collided of kissing love between the celestial body

egg and celestial body sperms. As a result, the evolution sequence of the main celestial bodies of the Humanoid Solar System was from the big end of head (the Sun) to the small end of tiptoe of foot (the Pluto), or from the inner layer to the outer layer of the Solar System, not including the Moon. It is shown by Figure 8 as follows,

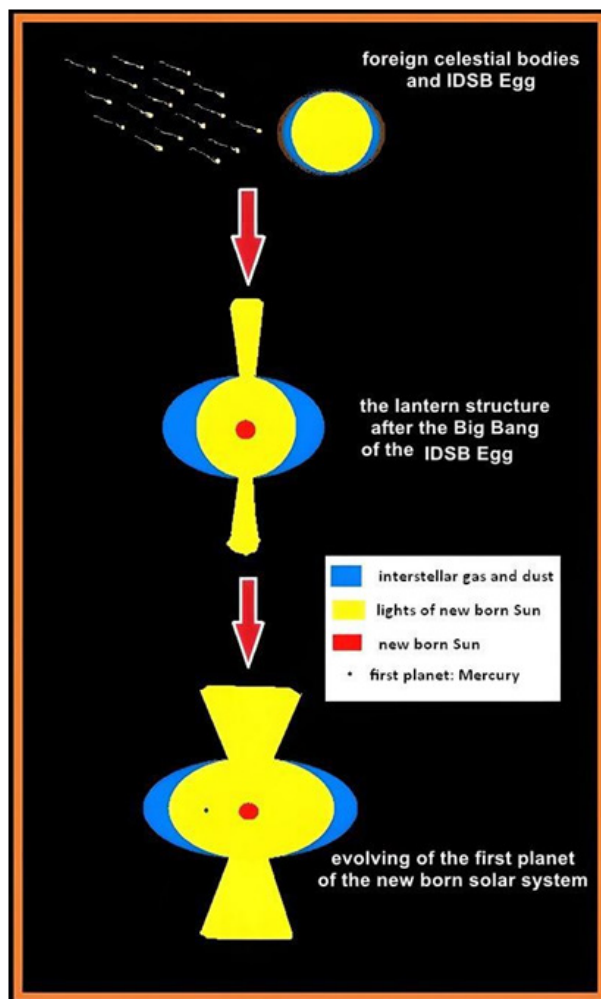


Figure 8: The evolution sequence of the main celestial bodies of the Humanoid Solar System

9. The Common Golden Law Implied by the Humanoid Solar System and the Human Individuals

In a word, the same common golden law of evolving is hinted by the Humanoid Solar System and the human individuals in different scales, the former is in the scale of celestial bodies while the latter is in the scale of micro stage. That is to say, every human individual coming to this world from the big end of head to the small end of foot naturally implies the concrete proof from which the Humanoid Solar System originated.

That is the quintessence of unity of heaven and humanity in Chinese traditional culture.

10. Conclusion

It is popular known that every human individual's life starts with the

combination of egg and sperm. However, it has been demonstrated by the latest academic research that every human individual's life actually starts with the Micro Bang of fertilized egg caused by the micro sparkling love between the egg and the sperms. Based on the corresponding relationship between the main celestial bodies of the Solar System and human body parts, it could be concluded that the Solar System originated from the Big Bang of the Interstellar Dirty Snow Ball Egg (IDSB Egg) after it was deeply kissed by the foreign celestial bodies (celestial body sperms). In other words, the life of the Humanoid Solar System started with the Big Bang of the fertilized celestial body egg. Both the Humanoid Solar System and human individuals conform to the same golden law of birth sequence that goes from the big end of head to the small end of foot [1-6].

Discussion

What Does the Pluto Symbolize in the Solar System?

The Pluto symbolizes the tiptoe of the Humanoid Solar System. therefore, it shouldn't be downgraded to dwarf planet artificially on 24 August 2006. The Pluto should be returned to the planet family of the Solar System and play the raw role bestowed by the Humanoid Solar System. Otherwise, the perfectness of the Humanoid Solar System would be destroyed by the common-

sense mistakes made by human beings without knowing deeply about the celestial body language implied by the Solar System.

What Does it Imply by the Structure of the Humanoid Solar System and Human Beings ?

It just implies the magic structure of Matryoshka doll of Russia. It is shown by Figure 9 as follows,



Figure 9: The magic structure of Matryoshka doll of Russia

So, the Matryoshka doll of Russia is not only a kind of artistic toy, but it also implies what is happening around us and the intimate relationship between the Humanoid Solar System and human beings.

Why Human Fetus Turn his or her Head in the State of Downwards in the Womb of his or her Mother Before Coming to this World ?

That is the behavior of human beings which is consistent with the evolution sequence of the Humanoid Solar System. That is from the big end of head to small end of foot or tiptoe for a human's individual to get the maximum survival rate before coming to this world and which is implied by the evolution process of celestial body language of the Solar System. That is what it implies by the quintessence of the unity of Heaven (the Solar System) and humankind.

What the Ultimate Meaning Does the Human Being Exist on the Planet Earth?

It implies the micro proof by billions of human beings that the Solar System originated from the fertilized celestial body egg and evolved from the big end of the head (the Sun) to the small end of the tiptoe (the Pluto) of foot . Further exactly speaking, the life of every human being born naturally would be mimicking that of the

Humanoid Solar System in micro scale.

References

1. YAN, H. (2025). The Celestial Body Language Implied By The Humanoid Solar System" should be replaced by"Yan, H. (2025) The Big Bang of the Interstellar Dirty Snow Ball Egg from which the Solar System Originated. *J of Electron Sci and Electrical Res* 2(1), 01-10.
2. Yan, H. (2023). The jigsaw recovery of the Earth's unique supercontinent 66 million years ago. Authorea Preprints.
3. Seeler, J. F., Sharma, A., Zaluzec, N. J., Bleher, R., Lai, B., Schultz, E. G., ... & O'Halloran, T. V. (2021). Metal ion fluxes controlling amphibian fertilization. *Nature chemistry*, 13(7), 683-691.
4. Duncan, F. E., Que, E. L., Zhang, N., Feinberg, E. C., O'Halloran, T. V., & Woodruff, T. K. (2016). The zinc spark is an inorganic signature of human egg activation. *Scientific Reports*, 6(1), 24737.
5. Zhang, N., Duncan, F. E., Que, E. L., O'Halloran, T. V., & Woodruff, T. K. (2016). The fertilization-induced zinc spark is a novel biomarker of mouse embryo quality and early development. *Scientific reports*, 6(1), 22772.
6. Hogan, J. (2006). Pluto loses planet status.

Copyright: ©2025 Henghua Yan. This is an open-access article distributed under the terms of the Creative Commons Attribution License, which permits unrestricted use, distribution, and reproduction in any medium, provided the original author and source are credited.