

Flood Risk Mapping: Quantifying Topographic Wetness Index to Determine Flood Risk Zones for Mutoko District in Zimbabwe

Ezra Chipatiso*

University of Zimbabwe (UZ), Faculty of Engineering and Built Environment, Department of Geo-Informatics and Surveying, Harare, Zimbabwe

*Corresponding Author:

Ezra Chipatiso, University of Zimbabwe (UZ), Faculty of Engineering and Built Environment, Department of Geo-Informatics and Surveying, Harare, Zimbabwe.

Submitted: 2023, Nov 10; Accepted: 2023, Dec 13; Published: 2023, Dec 19

Citation: Chipatiso, E. (2023). Flood Risk Mapping: Quantifying Topographic Wetness Index to Determine Flood Risk Zones for Mutoko District in Zimbabwe. *J Sen Net Data Comm*, 3(1), 215-222.

Abstract

Slope and topography help to describe the shape and relief of the land, allowing the hydrological and terrain analysis of a region by generating topographic wetness index (TWI). In this study the TWI is calculated using a digital elevation model raster layer. Spatial analyst tool and map algebra in ArcGIS was utilized to calculate slope, flow direction, flow accumulation, radian of slope, flow accumulation scaled, tan of slope, and ultimately TWI. Given that the TWI concept is less suitable in flat areas due to undefined flow directions, Mutoko District was chosen for this study due to its variations in topography. The index helps to quantify topographic control on hydrologic processes, terrain driven variation in soil moisture, and is highly correlated with several soil attributes such as horizon depth, silt percentage, organic matter content and phosphorous. However, TWI utilizes topographic elements of landscape to determine water flow and accumulation, and does not take into account additional information such as soil type or rainfall, which would be necessary for comprehensive assessment of flood risk zones. Availability of meteorological and hydrological data in addition to a digital elevation model (DEM), provides a more dynamic approach for comprehensive analysis, allowing dynamic simulations of spatially distributed water storage that can be used to derive alternative wetness indices.

Keywords: Digital Elevation Model, Hydrology, Slope, Topographic Wetness Index, Flood Risk Zone.

1. Introduction

The significance of topography in the distribution of water and energy within natural landscapes has been noted by various scholars. Extraction of topographic data from digital elevation models (DEMs) has been made possible by the use of satellites and drone imagery has been utilized as an alternative to traditional surveys [1]. Increasing quality and resolution of DEM products, through raster processing methodologies, has expanded the capabilities of GIS and its integration with water resources models, have seen the use of DEMs as a source of topographic and surface drainage information [2].

DEMs are widely used in hydrologic and geologic analyses, hazard monitoring, natural resources exploration, and agricultural management, amongst others [3,4]. A digital elevation model (DEM) is a 3D representation of a terrain's surface, created from terrain elevation data. According to the United States Geological Survey (USGS) Fact Sheet (2000), DEM data are arrays of regularly spaced elevation values referenced horizontally, either to the Universal Transverse Mercator (UTM) projection or geographic coordinate system (GCS) [5].

Hydrologic applications of the DEM include groundwater modeling, estimation of the volume of proposed reservoirs, determining landslide probability and flood prone area mapping. DEMs are commonly generated with data collected using remote sensing and land surveying techniques. Remote sensing data from satellites provide elevation data for various areas of interest. In this study, DEMs are utilized to support of hydrologic and water resources investigations with respect to the derivation of topographic data in order to generate a Topographic Wetness Index (TWI). The subject matter covered in this research is centered on DEM of natural landscapes for Mutoko District in Zimbabwe.

2. Literature Review: Application of Topographic Wetness Index (TWI)

Topographic indices depend on the quality and resolution of the DEM from which they were derived [6]. Though input of data affects the performance of wetness indices, increased DEM resolution is not an indication of better performance as ground water flow is less likely to follow small-scale topography.

Topographic wetness index is used to quantify topographic controls on hydrological processes, and TWI can also be used to characterize biological processes including forest site quality, vegetation patterns, and annual net primary production [7,8]. The TWI also provides a cost effective methodology for flood determination than conventional hydrodynamic models [9].

TWI has been used by engineers and land use planners to generate maps which delineates zones or land prone to flooding before approval for residential development. A study conducted by Pourali et al on the application of TWI approach to a flood prone study area in the town of Inverloch, Victoria, in Australia, the TWI proved useful in the early stages of land use planning for residential development in Inverloch [9].

2.2 Flow Routing Algorithms

Flow routing algorithms helps to identify stream channels at various spatial resolutions generated on the condition that water follows the steepest route along a relief and accumulates in low lying areas and depressions [10,11]. TWI can be calculated with different flow-routing, slope and flow width algorithms. A flow

accumulation algorithm can determine the ability of the TWI to predict soil moisture, while the flow width and slope algorithms may have minor effects [12]. The single flow (D8) algorithm is widely used for flow routing. The topographic wet index was developed by Beven and Kirkby within the runoff model.

The TWI is unit less and is given by: $Ln(a/tan b)$, where a is the local upslope area draining through a certain point per unit contour length, and $tan b$ is the local slope in radians. The TWI has been used to study spatial scale effects on hydrological processes.

3. Study Area, Materials and Methods

The study focuses on Mutoko District located in Mashonaland Central Province of Zimbabwe, 142 kilometers from Harare capital, with latitude between 20° N and 60 °N, and longitude between 120°W and 160° E. The district covers 4,092.5 square kilometers and is divided into 29 wards. The study area was selected due to its variation in topography, in support the views by Grabs et al, that TWI concept is less suitable in flat areas due to undefined flow direction which are more likely to change with time [3]. The location of study area is shown in figure 1 below.

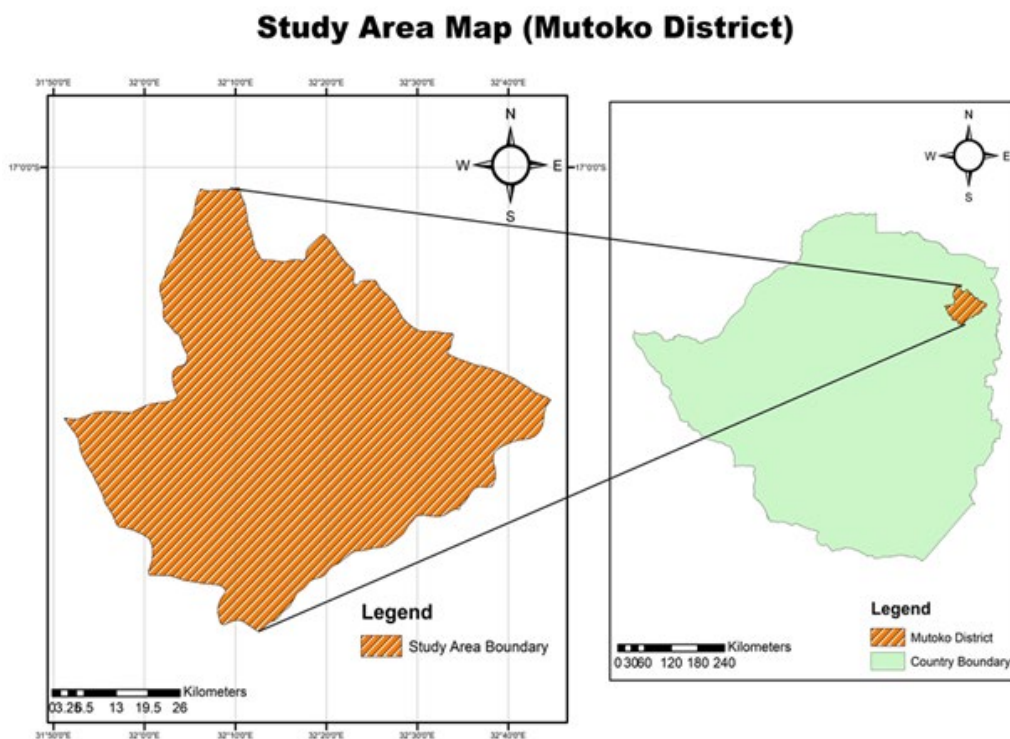


Figure 1: Location of Study Area

The rain season for Mutoko starts in October and ending in April, and the months of November, December, January and February have average rainfall days ranging between 10 and 20 days, whilst high average temperatures are experienced from the month of August to April (<https://www.worldweatheronline.com/mutoko-weather-averages/mashonaland-east/zw.aspx>).

The flow chart for the execution of hydrological analysis to generate TWI is given in figure 2 below.

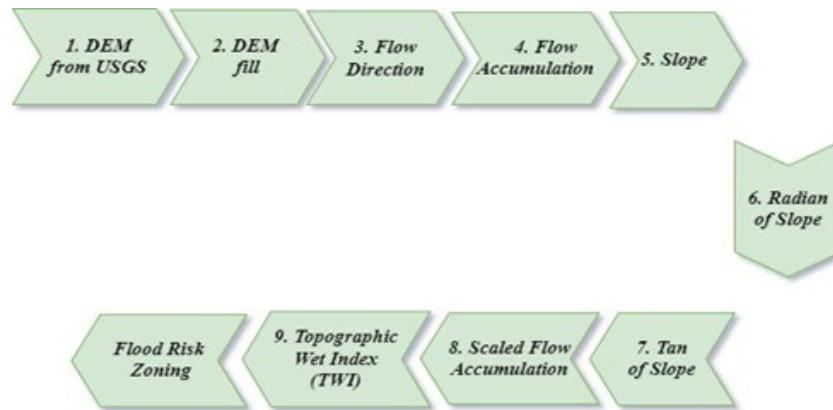


Figure 2: Methodological Flow Chart

3.1 Digital Elevation Model (DEM) from USGS Earth Explorer

The research was conducted using DEM for Mutoko District obtained from United States Geological Survey (USGS) Shuttle Radar Topography Mission (SRTM) at 1 Arc Second Global (30m) resolution. DEMs are generated using elevation data derived from existing contour maps, digitized elevations and photogrammetric stereo-models based on aerial photographs and satellite remote-sensing images (Garbrecht & Martz, 1992). Two SRTM satellite images from USGS (table 1) were mosaicked and clipped to the study area polygon to create DEM for the study area.

<i>Image ID</i>	<i>Resolution</i>	<i>Coordinates</i>
SRTM1S18_E031V3	1 Arc Sec	-18, 31
SRTM 1S18_E032V3	1 Arc Sec	-18, 32

Table 1: DEM images downloaded from USGS (<https://earthexplorer.usgs.gov/>)

ArcGIS 10.8 desktop was used to perform hydrological modelling from DEM. Spatial analysis tool in ArcMap 10.8 was used to generate fill, flow direction, flow accumulation and slope data. Raster calculator from the map algebra algorithm was used to generate radian of slope, tan slope, flow accumulation scaled and the TWI. Figure 3 below shows the DEM for Mutoko District, which was used to generate TWI and potential zones for flood risks.

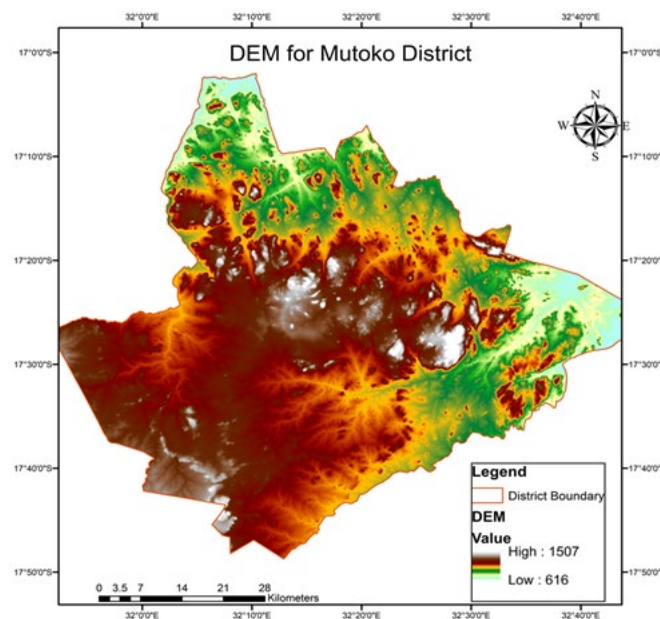


Figure 3: DEM for Mutoko District

4. Discussion and Findings

4.1 Flow Direction

Flow direction tool determines the direction of flow from each cell to its steepest downslope neighbor. The fill tool was used to fill sinks to remove imperfections from the DEM. The sink spatial analyst tool was used to identify sinks and their depths. To determine flow direction, filled DEM was used as input raster and a flow direction map was generated.

4.2 Flow Accumulation

In this study, flow accumulation helped in generation of stream network. Here flow direction was used as input raster to generate flow accumulation map. The cell values with zero or lower value represent ridges, while cells with higher values imply accumulation and may represent stream.

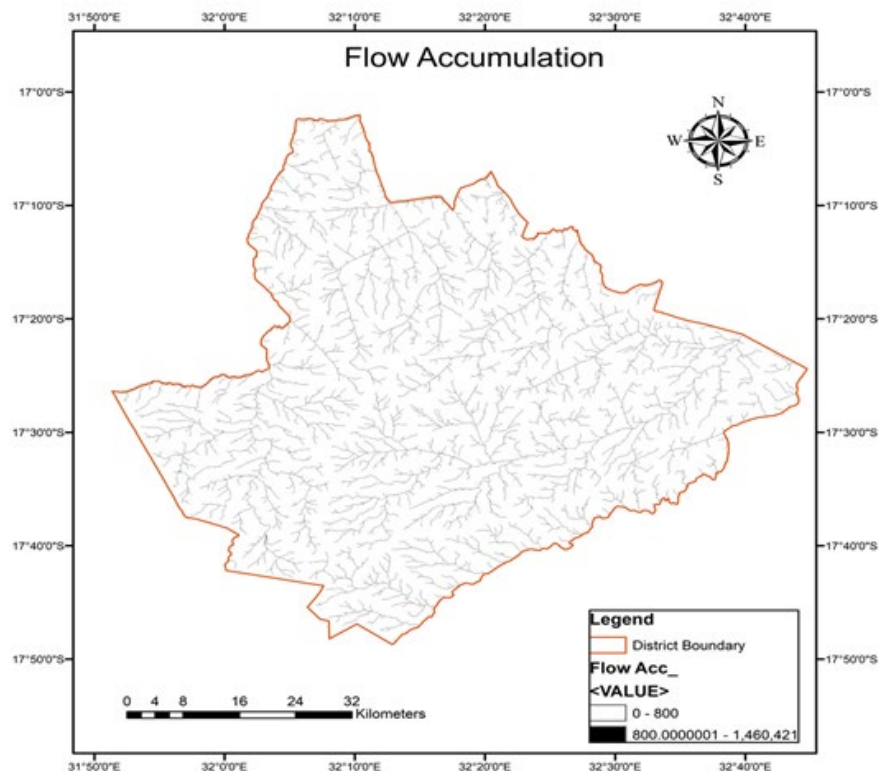


Figure 4: Flow Accumulation map for the study area, generated using ArcGIS 10.8

4.3 Slope Calculations

Slope tool in ArcMap was used to identify gradient or steepness from each cell of a raster. Planar method was used with output measurement in degrees. The Z-factor units of the output geographical spatial reference, with *Z-factor* of 2 (Z unit as meter).

4.3.1 Radian of Slope

The radians of a slope refer to its angle or gradient measurement. In this study, raster calculator was used to build and execute a single map algebra expression using python syntax in a calculator interface as shown in figure below, given by: *Radian of a slope* = $(\text{slope fill} * 1.570796) / 90$.

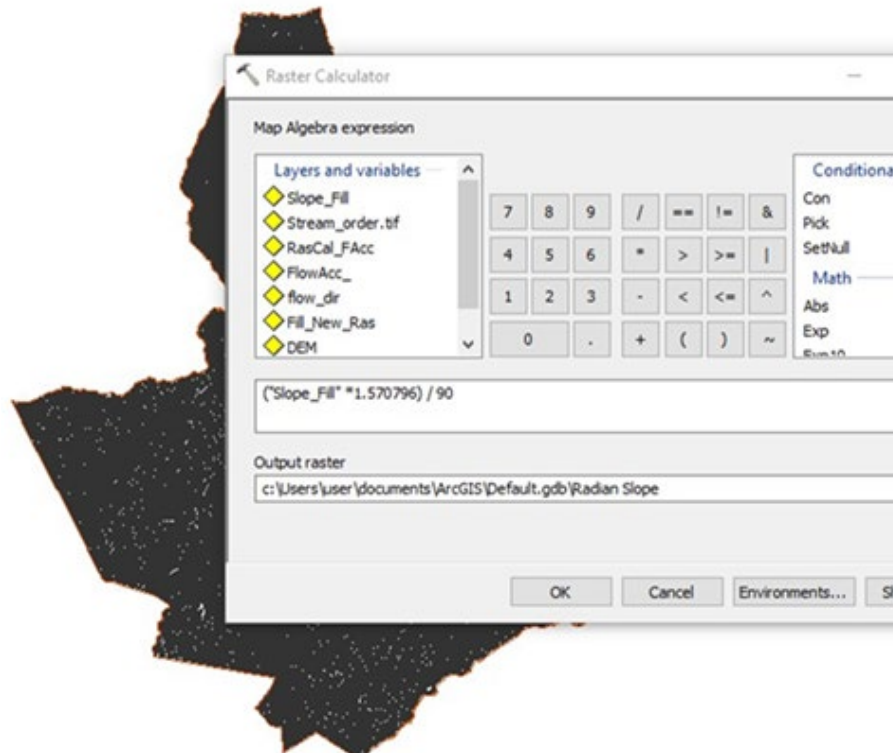


Figure 5: Radian of slope Calculations in ArcMap 10.8

4.3.2 Tan Slope

Tan slope calculation defined by: $Tan\ slope = con(Radian\ slope > 0, Tan(Radian\ slope), 0.001)$, was used to generate tan slope map. Lower values are common on the Southern part of the district

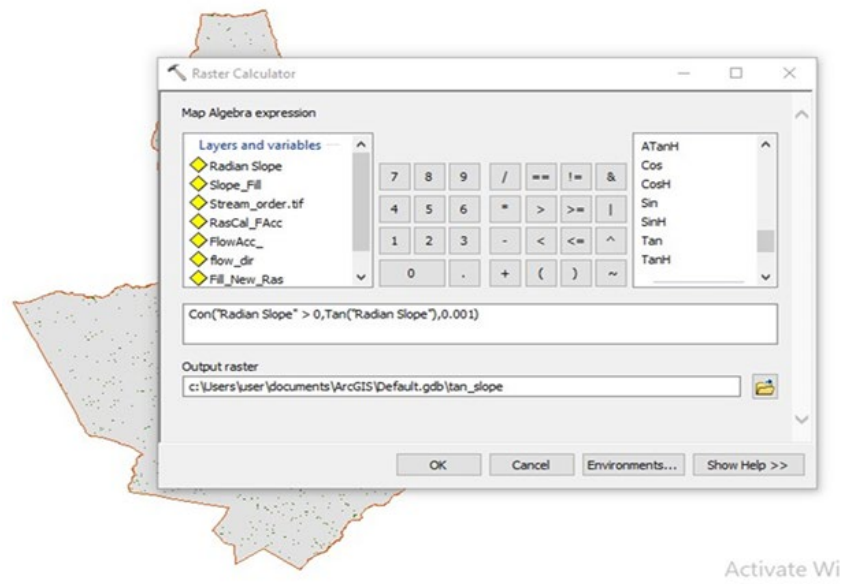


Figure 6: Tan slope Calculations in ArcMap 10.8

4.4 TWI Calculation

The TWI method mainly focused on the upper slopes and lower slopes to assess the trend of water accumulation in a region. TWI calculations were based on the topography of an area represented by DEM (Digital Elevation Model) data in the form of DTM (Digital Terrain Model). The high value of TWI is -1.20611 and is associated with high flood vulnerability, whilst lowest TWI value of -8.90624 is associated with low flood vulnerability. Based on the calculation of TWI value, flood-prone areas in Mutoko District include covers the southern and western part of the district as shown in figure 11. The TWI was generated by Map Algebra, utilizing raster calculator given by: $TWI = \ln(\text{flow accumulation Scaled} / \tan \text{ Slope})$

Flow Accumulation Scaled was derived using raster calculator, given by:

$(\text{Flow Accumulation} + 1) * 0.00027774796$, with 0.00027774796 as pixel size (x, y) and number of bands as 1.

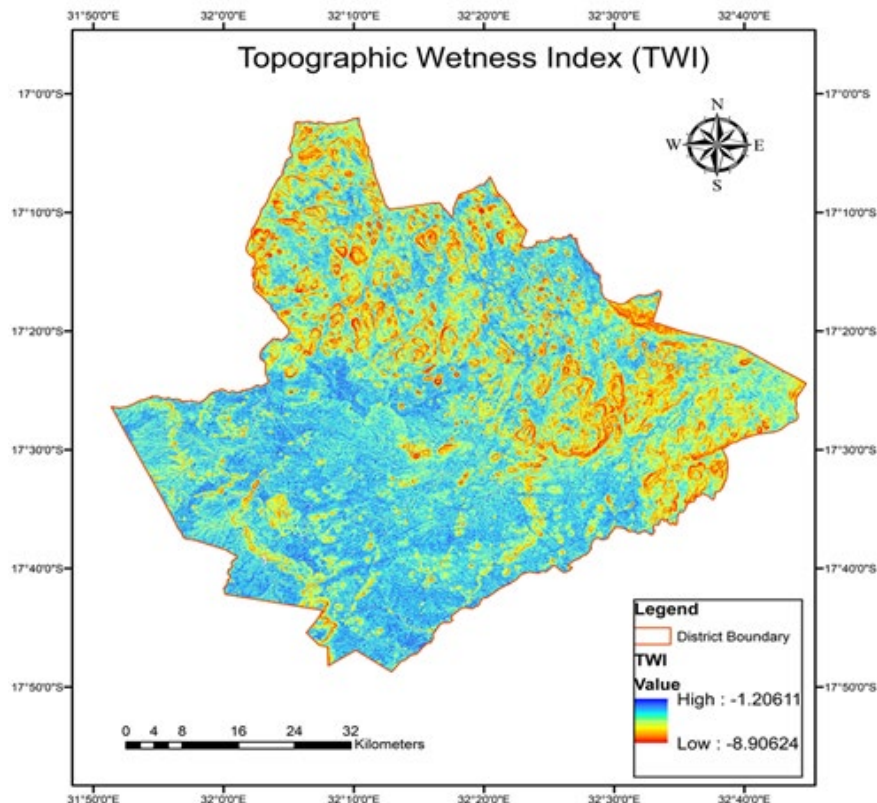


Figure 7: TWI map for the study area generated using ArcGIS 10.8

From figure 7 above, TWI layers are displayed with colour scheme indicating areas with less wetness in orange and red, whilst areas with high wetness are in blue. The yellow colour illustrates moderate TWI values, indicating lack of wetness.

4.5 Potential Flood Risk Zones

The potential flood zones in Mutoko District derived from TWI calculations are namely; low flood risk, moderate and high flood risk zones. As such, the higher the TWI, the higher the likelihood that the area is prone to flood risks, while areas with low TWI resemble low flood risk areas. From figure 7 below, the flood risk map for Mutoko District was derived from TWI calculations.

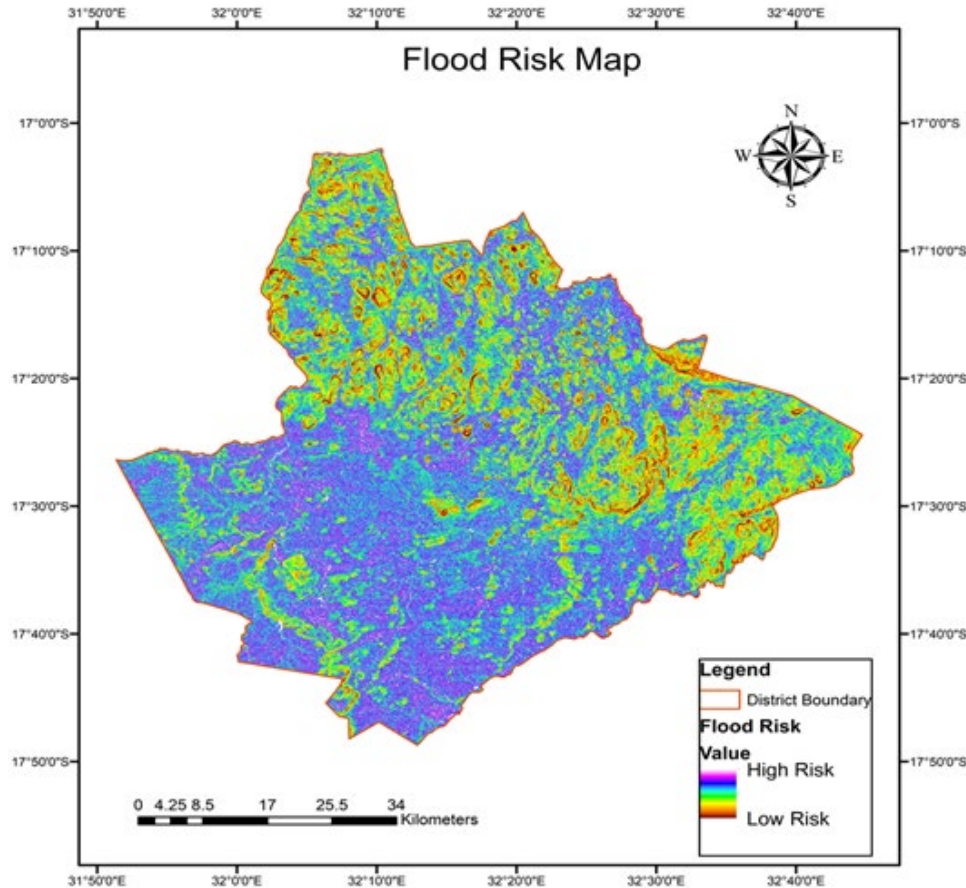


Figure 7: Flood Risk Potential Map for Mutoko District (based on TWI calculations)

TWI calculations help to generate flood risk maps which help District Administrators, Government ministries in decision making with regards to emergency preparedness, utilizing both climatic data and TWI to allocate resources.

5. Conclusions, Limitations and Recommendations

The flood potential zones in Mutoko District derived from TWI calculations are namely; low flood risk, moderate and high flood risk zones. As such, the higher the TWI, the higher the likelihood that the area is prone to flood risks, while areas with low TWI resemble low risk areas. Given that the TWI concept is less suitable in flat areas due to undefined flow directions which are more likely to change over time, Mutoko District was chosen for this study due to variation in topography in the region [3]. Though the index help to quantify topographic control on hydrologic processes and terrain driven variation in soil moisture, it is also highly correlated with several soil attributes such as horizon depth, silt percentage, organic matter content and phosphorous. Though TWI utilizes topographic elements of landscape to determine water flow and accumulation, additional information at micro scale such as soil type or rainfall, would be necessary for comprehensive hydrological modelling and flood risk mapping. Availability of meteorological and hydrological data in addition to a digital elevation model

(DEM), provides a more dynamic approach for comprehensive analysis, allowing dynamic simulations of spatially distributed water storage that can be used to derive alternative wetness indices [15,16].

Acknowledgement

The author wishes to thank colleagues at the University of Zimbabwe for their contribution in making this research a success.

Funding

No funding availed to conduct the research.

Potential Competing Interest

No potential competing interests to declare.

References

1. Lewis, G., & Holden, N. M. (2012). A comparison of grid-based computation methods of topographic wetness index derived from digital elevation model data. *Biosystems Engineering Research Review*, 17(103).
2. Buchanan, B. P., Fleming, M., Schneider, R. L., Richards, B. K., Archibald, J., Qiu, Z., & Walter, M. T. (2014). Evaluating topographic wetness indices across central New

- York agricultural landscapes. *Hydrology and Earth System Sciences*, 18(8), 3279-3299.
3. Grabs, T., Seibert, J., Bishop, K., & Laudon, H. (2009). Modeling spatial patterns of saturated areas: A comparison of the topographic wetness index and a dynamic distributed model. *Journal of Hydrology*, 373(1-2), 15-23.
 4. Nucifera, F., & Putro, S. T. (2017). Deteksi Kerawanan Banjir Genangan Menggunakan Topographic Wetness Index (TWI). *Media Komunikasi Geografi*, 18(2), 107-116.
 5. US Geological Survey (2000). US Geo-Data Digital Elevation Models. USGS Fact Sheet 040-00. US Department of Interior.
 6. Sørensen, R., & Seibert, J. (2007). Effects of DEM resolution on the calculation of topographical indices: TWI and its components. *Journal of Hydrology*, 347(1-2), 79-89.
 7. Beven, K. J., & Kirkby, M. J. (1979). A physically based, variable contributing area model of basin hydrology/ Un modèle à base physique de zone d'appel variable de l'hydrologie du bassin versant. *Hydrological sciences journal*, 24(1), 43-69.
 8. Sørensen, R., Zinko, U., & Seibert, J. (2006). On the calculation of the topographic wetness index: evaluation of different methods based on field observations. *Hydrology and Earth System Sciences*, 10(1), 101-112.
 9. Pourali, S. H., Arrowsmith, C., Chrisman, N., Matkan, A. A., & Mitchell, D. (2016). Topography wetness index application in flood-risk-based land use planning. *Applied Spatial Analysis and Policy*, 9, 39-54.
 10. Zhang, Y., Liu, Y., & Chen, Z. (2007, July). Multi-flow direction algorithms for extracting drainage network based on digital elevation model. In *Geoinformatics 2007: Geospatial Information Science* (Vol. 6753, pp. 826-834). SPIE.
 11. Li, X., Xu, L., Wang, H., Song, J., & Yang, S. X. (2010). A differential evolution-based routing algorithm for environmental monitoring wireless sensor networks. *Sensors*, 10(6), 5425-5442.
 12. Kopecký, M., Macek, M., & Wild, J. (2021). Topographic Wetness Index calculation guidelines based on measured soil moisture and plant species composition. *Science of the Total Environment*, 757, 143785.
 13. United States Geological Survey (USGS) Earth Explorer.
 14. Garbrecht, J. & Martz, L. W. (1992). Digital Elevation Model Issues in Water Resources Modeling.
 15. Novoa, J., Chokmani, K., Nigél, R., & Dufour, P. (2015). Quality assessment from a hydrological perspective of a digital elevation model derived from WorldView-2 remote sensing data. *Hydrological Sciences Journal*, 60(2), 218-233.
 16. World Weather Online: Mutoko Annual Weather Averages.

Copyright: ©2023 Ezra Chipatiso. This is an open-access article distributed under the terms of the Creative Commons Attribution License, which permits unrestricted use, distribution, and reproduction in any medium, provided the original author and source are credited.