

Atypical Lens Subluxation in Marfan Syndrome

Elakhdari M*, Akannour Y, Bardi C, Mrad K, Elmajdoubi K, Serghini L, El Hassan A and Berraho A

Department of Ophthalmology, Hospital of Specialties, Rabat, Morocco

*Corresponding Author

Elakhdari Meriem, Department of Ophthalmology, Hospital of Specialties, Rabat, Morocco, Tel: 0675028586

Submitted: 10 Apr 2023; Accepted: 19 Apr 2023; Published: 28 Apr 2023

Citation: Elakhdari M, Akannour Y, Bardi C, Mrad K, Elmajdoubi K, et al. (2023) Atypical Lens Subluxation in Marfan Syndrome. *J Ophthalmol Clin Res* 7(1): 171.

A 16-years-old male, presented with complaints of both eyes decreased in vision since childhood.

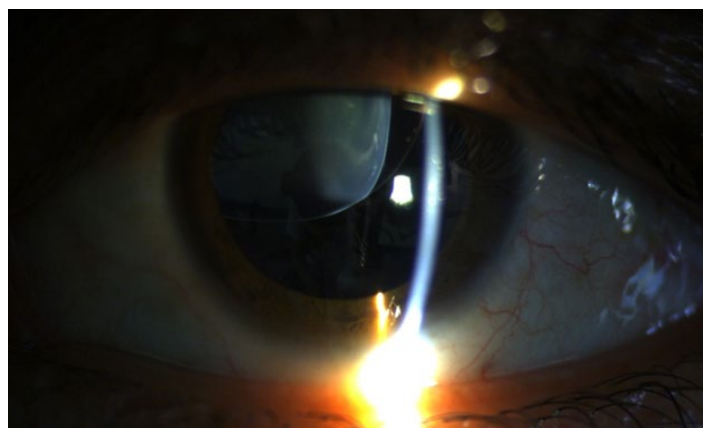
Ophthalmological examination revealed a limited visual acuity to counting finger in right eye and 1/10 in left eye, with clear corneas and normal intraocular pressure in both eyes.

After dilatation, there was presence of superonasal of subluxated crystalline lens with visible edge of the lens and zonules in both the eyes, with presence of associated vitreous prolapse in anterior chamber as well.

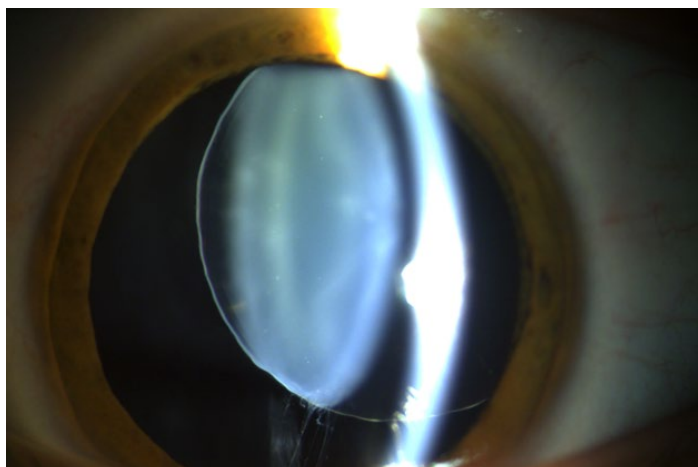
The fundus examination of the posterior pole and the retinal periphery were both normal.

Clinical and paraclinical exams confirm the Marfan Syndrome.

Patient was managed with lensectomy with anterior vitrectomy, and scleral fixated intraocular lens implantation.



Clinical image of patient showing bilateral superonasal lens subluxation (right eye and Left eye), with weakened zonules and vitreous prolapse.



Copyright: ©2023 Elakhdari Meriem, et al. This is an open-access article distributed under the terms of the Creative Commons Attribution License, which permits unrestricted use, distribution, and reproduction in any medium, provided the original author and source are credited.